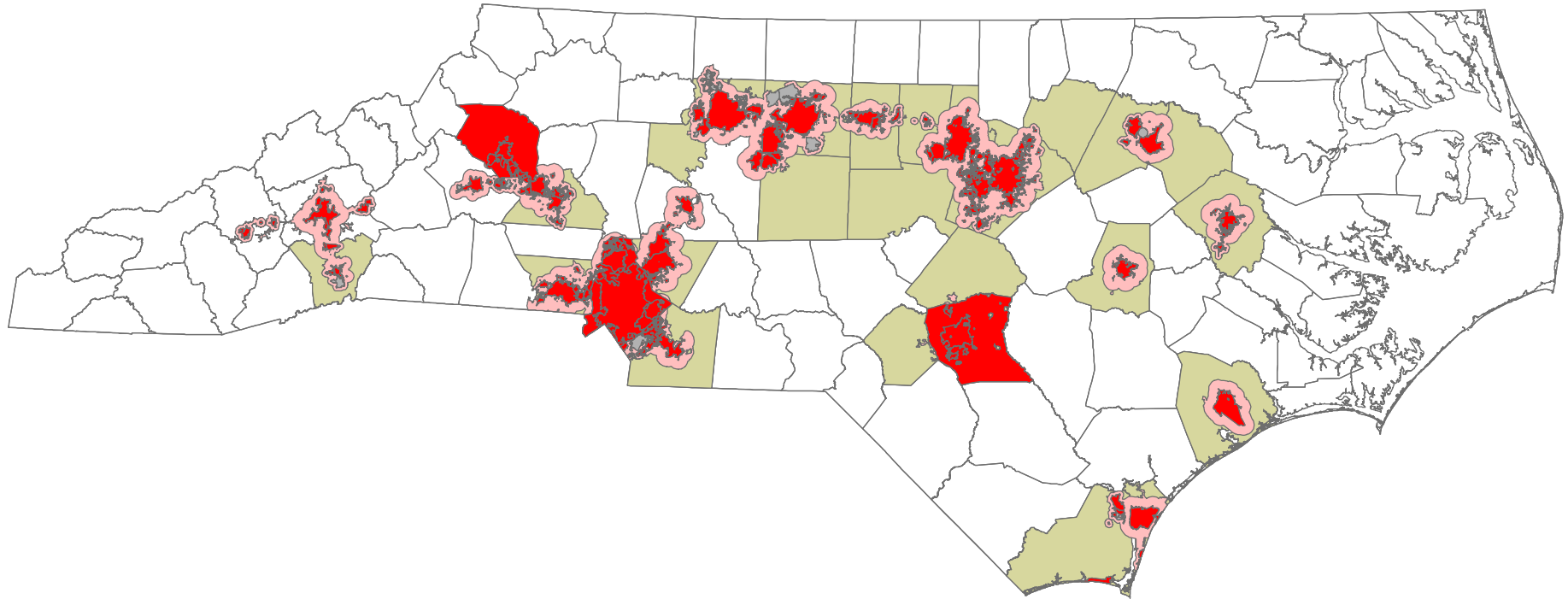


# NPDES Phase I/II Communities, Excluding Exempted Municipalities\*, & Tipped Counties with County-wide Post-Construction



\*As of 10/06. Note - Post-Construction requirements still apply inside exempted municipality boundaries and will be implemented by DWQ or delegated authority (e.g., County).

## Legend (Post-Construction Areas per Session Law 2006-246)

- Phase II Tipped Counties (Post-Construction)
- Phase II MSIs & UAs (2003)
- NPDES Communities (2003)
- Exempt Municipalities (2003)

0 25 50 100 Miles